



Meet our Junior Student Leaders

Dottie, Poppie, Emma, Kadan, James, Finlay, Ben, Lowansa and Russell were all successful with their applications to join this year's Junior Student Leaders' Team.

The JSL team will meet during Flourish lessons and will be working on different projects throughout the year. These will include fundraising, supporting school events and working towards an Eco school award.

They have already set up a Halloween Competition for KS3 students, details are on the fabulous poster they have produced. The JSL have already shown great teamwork in setting this competition, working together and sharing ideas. I am looking forward to working alongside them.

Mrs Parkin

Headteacher's Introduction

Dear Parent / Carer

This week has seen a range of visitors in school helping us to review the quality of our provision for young people and to plan for our next steps. The feedback we received about the commitment and passion of our staff team, the inclusive ethos of our school, the values that underpin our work, the warmth of the welcome they received and the positive attitudes and polite behaviour of our students was overwhelmingly positive.

As a leadership team we have welcomed the opportunity to spend even more time in lessons engaging with young people about the work they are doing in class and reflecting on the strategies that help them to know more and remember more; to be ambitious about their work and show pride in their achievements.

A reminder that school will be closed on Friday 10th as a mark of respect for Mr Connors. Thank you to those young people who have shared their memories of Mr Connors and to parents who have sent messages of sympathy and support. This is very much appreciated by staff and by Mr Connors' family.

Kath Jordan, Headteacher

Reminders

- Friday 10.10.25 school closed all day
- Thursday 16.10.25 Y11 Parents' Evening - book appointments on Arbor
- Friday 17.10.25 'Remembering Mr Connors' events for Y8/9 and Y10/11
- Thursday 23.10.25 PTFA Quiz Night
- Friday 24.10.25 School closed to students for staff training
- Monday 3.11.25 school reopens after half term



Fun and Fundraising for Our School Community – inaugural KS3 Colour Run

Our recent KS3 Colour Run was a fantastic success, with students and staff alike getting involved in an afternoon of energy, laughter, and a lot of colour! The event was filled with smiles as participants ran, jogged, and walked their way around the course while being showered in bright powders.

Not only was it great fun, but the Colour Run also raised valuable funds for the PTFA, whose ongoing work plays such an important role in supporting our school community. We are grateful for the enthusiasm of our students and the generosity of families who contributed to the event.

A huge thank you goes to everyone who helped make the day possible—it was a wonderful celebration of teamwork, positivity, and school spirit.

Nidderdale High School PTFA
invites you to our first



In memory of
'Quiz Master' Mr Connors

**Raffle, refreshments to purchase and
the chance to win The Connors Cup!**

**OCTOBER | 23
6:30 PM**

Arrive any time from 6pm

Adults £5, Children £2.50
Maximum 6 per team

Pay on School Gateway

PTFA
PARENTS, TEACHERS &
FRIENDS ASSOCIATION

Our Parent, Teacher & Friends Association re-started last Summer and aims to support students by raising funds, providing resources, and organising events that bring our school community together.

Whether you'd like to help at events, donate, gain sponsorship from local businesses, or connect us with a company that might want to get involved, your support makes a real difference.

To find out more, contact Mr Devanney or Jennie Eyres (jenfer100@hotmail.com), or look out for details of our meetings in the school newsletter and emails.

Everyone's welcome!

Our next event is the Quiz Night – details on the flyer.



**School success starts
with attendance**

Attendance Update

We are really pleased to share that our attendance so far this September is higher than at the same point last year. This is a very positive start to the school year and shows the commitment of our students and families in recognising the importance of being in school every day.

We would like to thank all parents and carers for your continued support in ensuring strong attendance. Regular attendance makes a huge difference to learning, progress and wellbeing, and it is great to see this reflected in our figures so far.

Let's keep working together to maintain this momentum and aim even higher in the weeks ahead.

Charity Fundraising

'One of our lovely science teachers is completing the '62 miles in October' challenge for Diabetes UK.

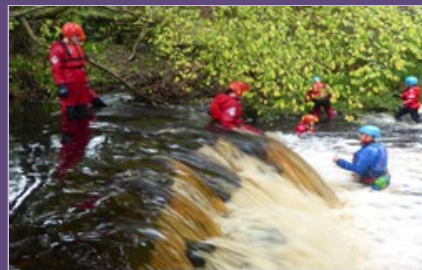
Years 7/8 students had an assembly from Mrs Hajjawi earlier in the week about her life as a type one diabetic and the challenges it presents. The year 11 students are all currently learning about this in their biology lessons as well. With a few other pupils as members of the diabetic community.

Mrs Hajjawi wanted to raise awareness and funding for the charity. This is her justgiving link, give the story a read and please donate:

https://www.justgiving.com/page/elly-hajjawi-2?utm_medium=FA&utm_source=CL

Outdoor Challenge Days Winners' prize

The winning team from last year's Yr8 Outdoor Challenge Days celebrated their win in good adventurous style this week, with an extra NiddVenture day as their prize. They chose to spend it Ghyll Scrambling, with some higher water levels than we've seen for a while making it an exciting trip! Well done to all for embracing another challenge and working so well together.





SAT
8
NOV

Pateley Bridge Bonfire & FIREWORKS

PATELEY SHOWGROUND 6PM

Entry By Donation

Torchlit Procession & Bonfire 6.30pm
Fireworks 7pm

FREE TO ENTER BEST GUY COMPETITION

PULLED PORK : HOT DOGS : HOT CHOC

ORGANISED BY UPPER NIDDERDALE SCOUT GROUP
By kind permission of the Nidderdale Agricultural Society

Suggested Donation £4pp - £15 family

SORRY NO SPARKLERS ALLOWED

Craven College & The Aviation Academy



EVENTS

We'd love to welcome you at one of our Open Events. Discover our Apprenticeship, Degree, T Level & Vocational courses.

OCTOBER 2025

- OPEN EVENING (SKIPTON)
Mon 06 October - 5:30pm - 7:30pm
- OPEN EVENING (AVIATION ACADEMY)
Wed 08, Thu 09 & Wed 15 October - 5:30pm

NOVEMBER 2025

- OPEN EVENING (SKIPTON)
Mon 17 November - 5:30pm - 7:30pm
- OPEN EVENING (AVIATION ACADEMY)
Wed 19 & Thu 20 November - 5:30pm

JANUARY 2026

- OPEN EVENING (SKIPTON)
Sat 17 January - 10am - 12pm
- TASTER MORNING
Fri 30 January - 9.30am - 11.30am
- OPEN EVENING (AVIATION ACADEMY)
Wed 21 January - 5:30pm

FEBRUARY 2026

- APPRENTICESHIP
JOB FAIR
Wed 11 February - 3:00pm - 6:30pm

MARCH 2026

- OPEN EVENING (SKIPTON)
Wed 11 March
5:30pm - 7:00pm
- OPEN EVENING (AVIATION ACADEMY)
Wed 18 March - 5:30pm

JUNE 2026

- OPEN EVENING (SKIPTON)
Mon 15 June - 5:30pm - 7:00pm
- OPEN EVENING (AVIATION ACADEMY)
Wed 17 June - 5:30pm
- FUTURE STUDENT MORNING
Fri 26 June
- YEAR 10 TASTER MORNING
Tue 30 June



Scan the QR code or visit our website to register for our next event: www.craven-college.ac.uk/events

AUTUMN ROCK CLIMBING



Our holiday climbing sessions are an ideal way for kids to get out and enjoy the great outdoors during the holidays. With activities including climbing, abseiling and weaselling, it is an action-packed day.

Holiday Session - £55.00 (7-16 years old)

Ilkley Cow & Calf: Monday-Wednesday, 10:00-16:00

Brimham Rocks: Thursday-Friday, 10:00-16:00

Childcare Vouchers accepted



Book online or contact us via email



www.mypeditionrocks.com ✉ info@mypeditionrocks.com

A fun-filled, action-packed half term

If you're looking for fun and adventure in the great outdoors, we've got an exciting and inspiring range of activities planned to get young people and their families active and in touch with nature this half term.



Bewerley Park Outdoor Education Centre
Pateley Bridge
East Barnby Outdoor Education Centre
Whitby

Monday 27 to Friday 31 October

From our Adventure Club to Family Activity Days, there's something for everyone!
Go to outdoored.co.uk/schoolholidays

NOLS North Yorkshire
Outdoor Learning Service

